

Country Report of the Kingdom of Cambodia

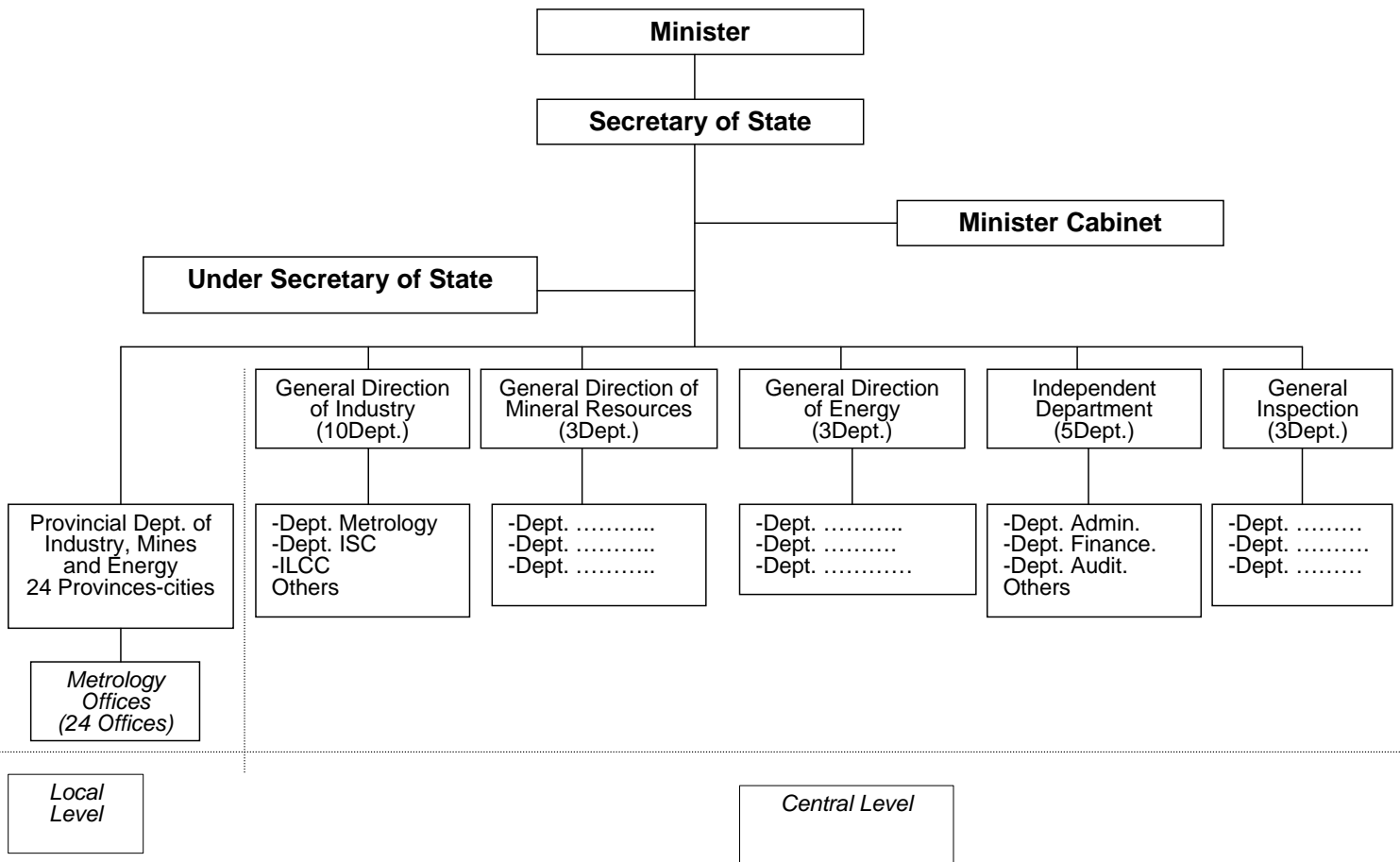
Training Course
on
Verification on Mechanical Weighing Scales
from 25-28 September 2007
In Ho Chi Minh City, Viet Nam.

Presented by
Dr. LAIM Kimleng
Official, Provincial Department of Industry, Mines
and Energy Sihanouk Ville, MIME.

1-Introduction

- My name is LAIM Kimleng. You can call me Leng.
- I worked for the Metrology Office of the Provincial Department of Industry, Mines and Energy in Sihanouk Ville.
- I have been working in metrology field for three years.
- Please see my organization chart of the Ministry of Industry, Mines and Energy as below:

Organization Chart



2-Legal Metrology System

- The Department of Metrology and the Metrology Offices in all provinces and cities are implementing the law and its regulation. All types of weighing instruments and its measuring ranges are covered by the metrology law. (Note: Article 29 of the draft metrology law).
- For inspection and verification, the Department of Metrology and the Metrology Offices in all provinces and cities are performed every year. There are three types of verification:
 - a-Initial verification. (For new instruments before use and after repaired)
 - b-Periodical verification or re-verification. (For used instruments, verify every year)
 - c-Unexpected verification. (In the irregular case complained by costumers). (Note: Article 28 of the draft metrology law).
- Regarding to the verification, the number of instrument was increased from year to year.
- Currently, we do not have the type approval, but we are responsible for the type approval. (Note: Article 33 of the draft metrology law).

3- Situation on NAWI

- In my country, most of the Non Automatic Weighing Instruments (NAWI) use in the markets. There are no manufacturers of NAWI in my country. The weighing instruments were imported from China, Thailand and Viet Nam. We estimate that the percentage of the production of NAWI is below:
 - a-Electronic weighing scales, approximately 8%
 - b-Mechanical scales using a spring, approximately 74%
 - c-Mechanical balances using a weigh beam and weights, approximately 18%
- The accuracy class is: class III and class IIII. The maximum capacity ranges are: 0.5kg, 1kg, 2kg, 5kg, 10kg, 12kg, 15kg, 20kg, 30kg, 60kg, 100kg, 120kg and 150kg. But the most commonly used is the spring scales which its maximum capacity 15 kg.
- Regarding to the OIML R 76, my country was implemented through their procedure and it is the foundation for control and verification of NAWI.

4- Conclusion

- For the time being, there are some agencies involved metrology sector had supported my country. But we still have problems such as:
 - lacked of human resources,
 - inadequate physical standards,
 - the draft metrology law is still Inter-Ministries discussing at the Office of the Council of Ministers.Also, we are insufficient budget for running the legal metrology system.

5-Acknowledgment

- Finally, I would like to express my sincere thanks to all organizers and supporting organizations that have supported me for this training course and coordinated with my organization.
- Thank you for your kind attention.