



Ministry of Industry & Handicraft



1

NATIONAL METROLOGY CENTER



By: Mr. VANN CHANNRAT

Date 28-01 December 2016

Table of Content

2

1. NMC: National Metrology Center
2. Structure of NMC
3. NAWI
4. Traceability System
5. Challenge
6. Questions



1. NMC: NATIONAL METROLOGY CENTER

3

- NMC was established under Metrology law of Cambodia on 22nd April 2011.
- NMC is a competent authority for managing all activities and services related to metrology such as scientific metrology, industrial metrology and legal metrology and managing, maintaining all three class measurements standards in the Kingdom of Cambodia as follows: National Primary standards, Secondary standards and Working standards.
- NMC is a competent implement by the Metrology law of Cambodia and shall cover the implementation of manufacturing, importation, installation, use, repairs, maintenance and the exposure for sale of metrology instruments, product goods, pre-packaged goods within the Kingdom of Cambodia.



1. NMC: NATIONAL METROLOGY CENTER

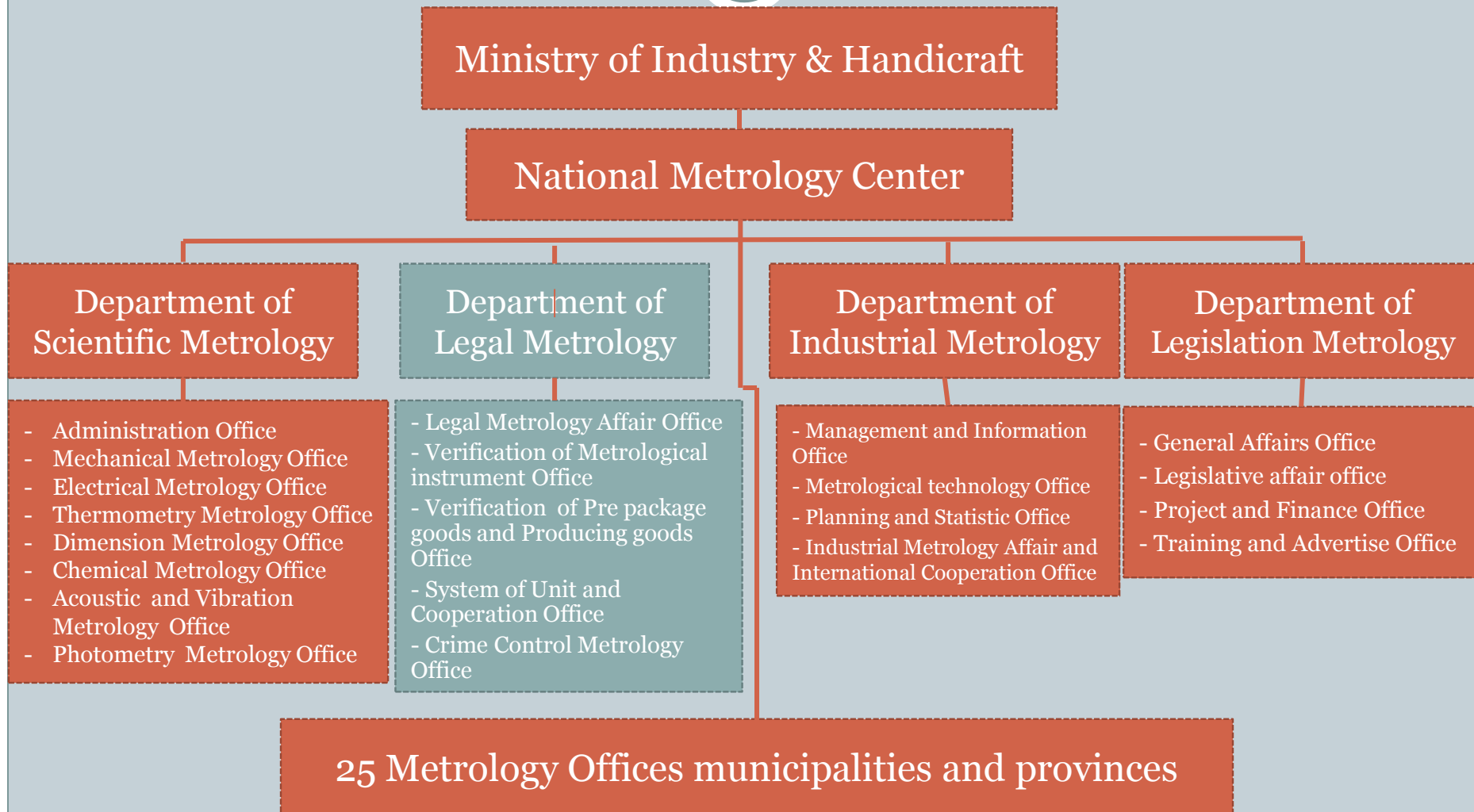
4

- NMC is a member of International Organization of Legal Metrology (OIML) in 2016
- NMC is a member of Asia-Pacific Legal Metrology Forum (APLMF) in 2002
- NMC is a member of Asia-Pacific Metrology Program (APMP)
- NMC is a member of Asian Consultative Committee on Standards and Quality (ACCSQ)



2. Structure of National Metrology Center

5



The Map of Metrology Offices

6





Building of NMC

7

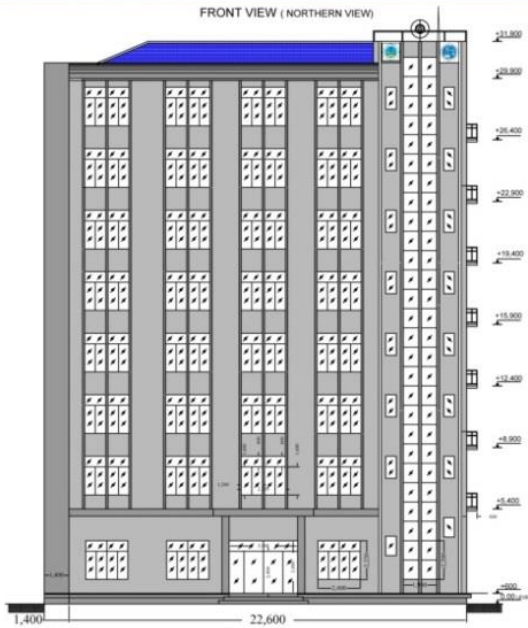


Office of Building of NMC

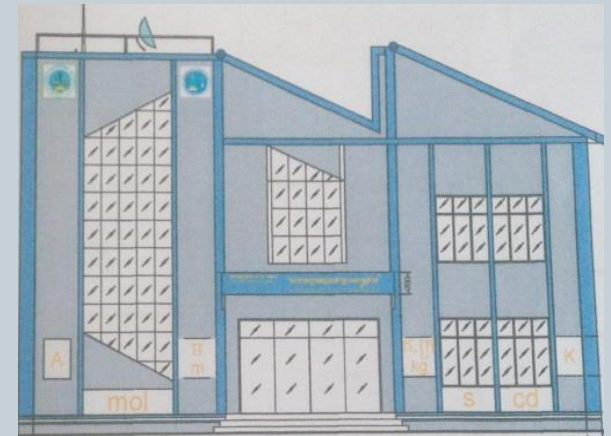


Laboratories of NMC Km 7

FRONT VIEW (NORTHERN VIEW)



Metrology Science building



Building layout of Metrology Offices of municipalities and provinces



3. NAWI

8

- Established the National regulation on verification on NAWI following OIML and ASEAN Requirements
- Initial Verification
- Subsequence verification
- Verification after Repairing



3. NAWI

9

Test Procedure for Verification

1. Repeatability test
2. Eccentricity test
3. Discrimination
4. Sensitivity
5. Weighing performance



3. NAWI

- Verification Mark



Initial mark of verification



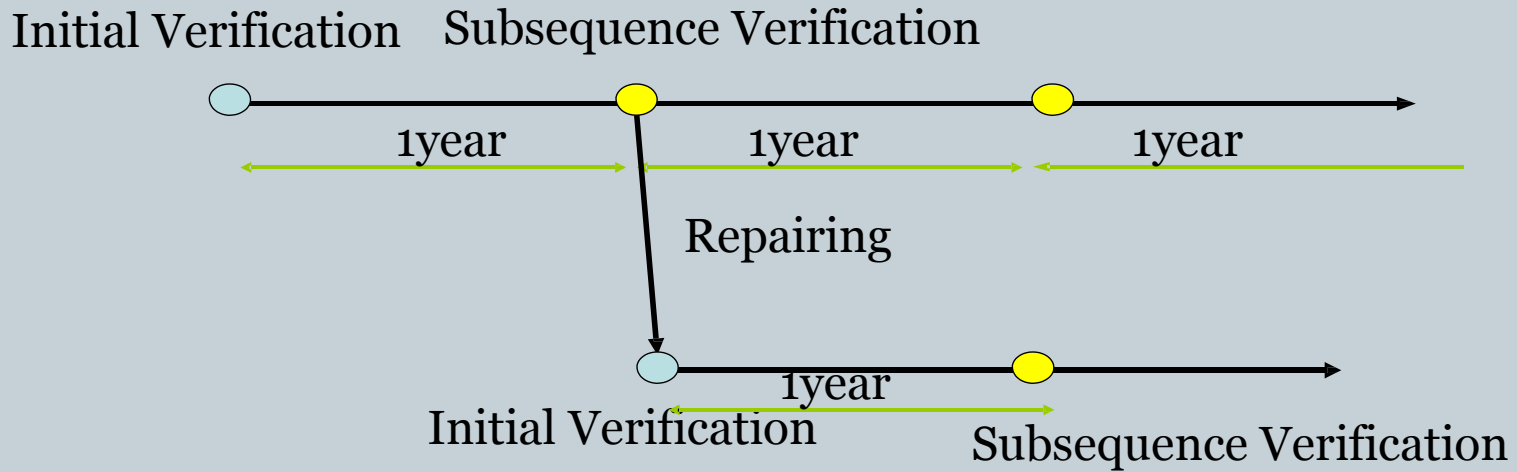
Subsequent mark of verification

-- Seal



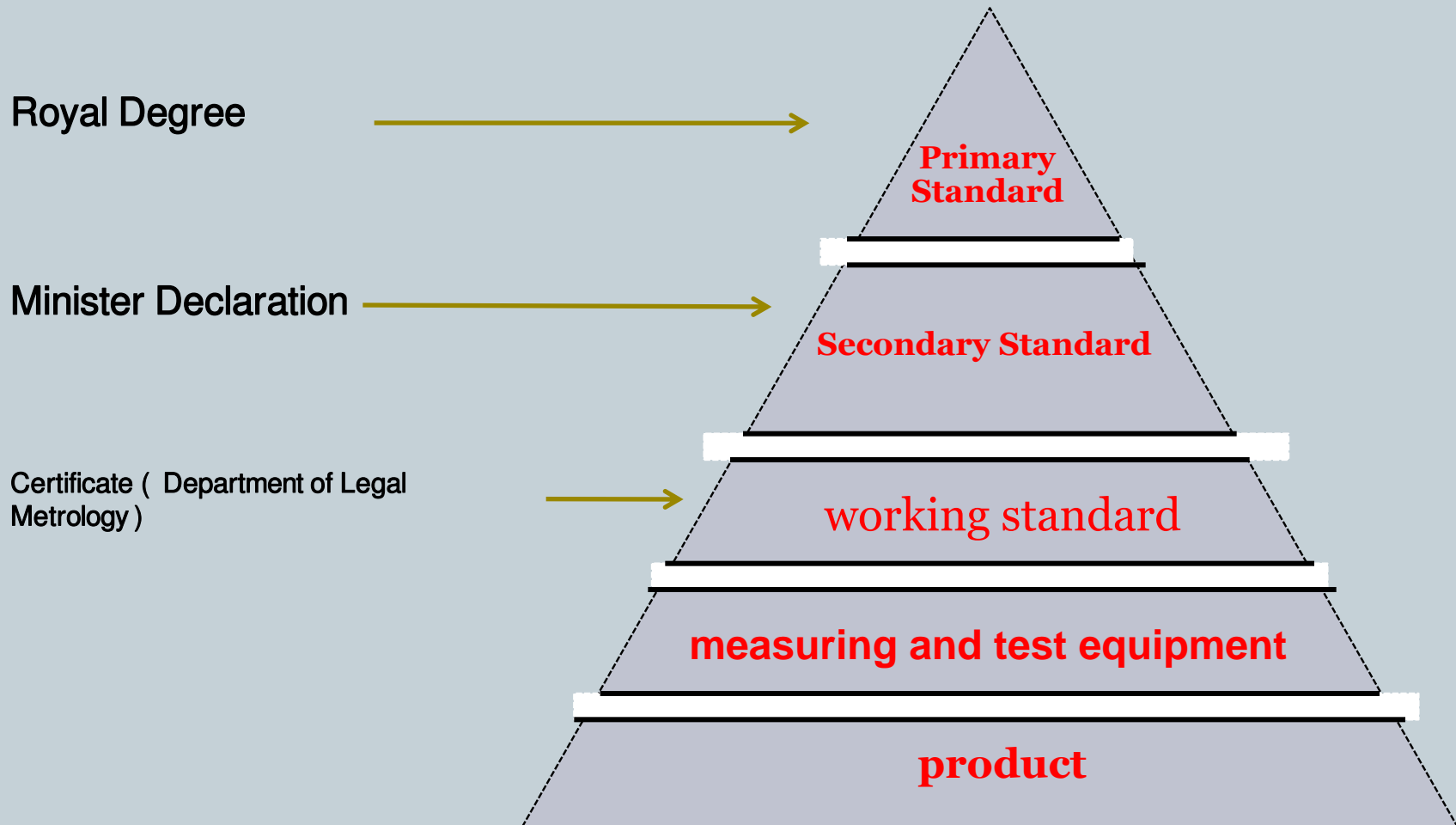
3. NAWI

Periodic of Verification



4. Traceability System

12



5. Challenge

13

- Lack of facilities for Pattern Approval of NAWI
- Lack of technical assistance (Experts)
- Limited budget for development.
- Lack of National Primary, Secondary and Working standards
- Law enforcement still limited



6. Questions????

14



Thank you!

