

New Zealand - Economy Report Highlights

Key Activities – 2018/19

Beer

- New guidance published
 - Two test procedures
 - Equipment specifications
- Focus on small businesses
- Collaboration with Measurement Standards Lab.



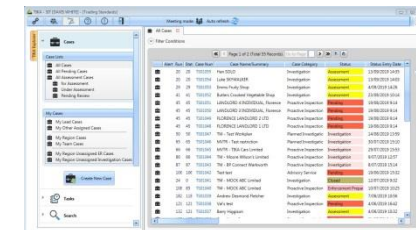
Example of recording volume checks for packers

Product Name	Batch Number / ID	Stated Net Volume (mL)	Weight of Full Package (g)	Weight of Empty Packaging (g)	Weight of Beer in Package (g)	Density of Beer (g/mL)	Actual Net Volume	Error (mL)
Stout	20181111	330	400	75	325	1.011	321.5	-8.5
IPA	20181110	650	750	80	670	1.014	660.7	+10.7

Note: This test method can be used to determine the volume of multiple packages from the same batch without destruction of each sample, assuming that the density of the beer and the packaging weight remains constant.

TIKA

- New Investigations Case Management system
- Ministry wide / More consistency / efficient processes
- Information sharing – identify high risk offenders
- Cost effective
- Improved reporting function



Future Focus - 2020 & beyond

Project based working

- ‘New’ approach to enforcement
- Part of strategic review of what we do and how
- Each officer assigned a project
- Scope: industry and / or issue specific, known and emerging issues
- Outcome: legacy / futureproof



Environmental Conscious NZ

- Government initiative
- Current: removal of single use plastic bags from retail
- Future: removal of all plastics from retail
- Guidance and advice provided

