
MEDEA: “Metrology – Enabling Developing Economies in Asia”

Train-the-Trainer Course on the Verification of Non-automatic Weighing Instruments

28 Nov to 1 Dec 2016 in Kuala Lumpur, Malaysia

Register by 29 August 2016

Introduction

Accurate measurement in the marketplace is an important component of an economies’ metrological system and is closely linked to quality of life. APLMF has conducted training courses on non-automatic weighing instruments (NAWIs) for the past 20 years in order to support developing economies to implement harmonized verification procedures to ensure consumers and vendors are benefiting equally from a sound measurement infrastructure that inspires confidence and trust within the community.

Objective

This program is designed for people who verify NAWI with a capacity less than 3 t such as shop scales or who have a responsibility for ensuring that these instruments are verified in accordance with OIML recommendations. All participants are expected to have practical experience in the field. This training is composed of lectures and practical activities. The lectures will outline the test procedures and the reference standards of measurement used to ensure they are operating correctly within the maximum permissible error. The practical component will provide an opportunity for participants to demonstrate their ability to test a NAWI in accordance with OIML recommendations.

This course provides participants with the knowledge and skills to:

- understand the role of trade measurement within an economy
- identify the major components of a NAWI
- analyse the NAWI operating environment to determine how it could impact on its performance
- identify sources of any possible operational error
- verify a NAWI in accordance with the test procedures and workplace health and safety guidelines
- train others to verify NAWI

Organizers:

1. Physikalisch-Technische Bundesanstalt (PTB)
2. Asia-Pacific Legal Metrology Forum (APLMF)

Supporting Organizations:

1. Ministry Of Domestic Trade, Cooperatives and Consumerism (MDTCC), Malaysia
2. National Metrology Institute, Malaysia (NMIM)
3. National Measurement Institute, Australia (NMIA)

Trainers:

1. Mr Matthew Lux, National Measurement Institute, Australia
2. Mrs Marian Haire, National Measurement Institute, Australia

Venue and Accommodation:

- Kuala Lumpur is located 50 km from the Kuala Lumpur International Airport (KLIA)
- Accommodation for overseas participants will be organised in the Corus Hotel, Kuala Lumpur. The hotel will be booked and paid directly by PTB

Corus Hotel

Jalan Ampang, 50450 Kuala Lumpur, Wilayah Persekutuan Kuala Lumpur, Malaysia, Tel:+60 3-2161 8888.

- To access the venue, you will need to take the airport limousine to transfer to the hotel. The cost of the transfer will be covered by PTB. If you need a visa to enter Malaysia, fill the attached “**Visa Assistance Form**” and send it to the **host in Malaysia** by 29 September, 2016.

PTB Support:

Up to two overseas participants from each developing economy in Asia will receive an economy return flight ticket, free accommodation, free airport transfer and a daily allowance. Participants from economies classified as developing countries under the OECD Development Co-operation Directorate (ODCD-DAC)¹ are eligible. Only participants from institutions that have participated in the Regional Capability Survey² are eligible. Flight tickets will be booked by PTB (please contact Stefanie Scheschinski). The hotel will be paid directly by PTB. Participants will receive a daily allowance paid in cash during the workshop.

¹ see <http://www.oecd.org/dac/stats/daclist.htm>. Eligible economies in Asia: Bangladesh, Bhutan, Cambodia, Fiji, India, Indonesia, Kazakhstan, Kyrgyzstan, Laos, Malaysia, Mongolia, Myanmar, Nepal, Pakistan, Papua New Guinea; Philippines, Sri Lanka, Thailand, Uzbekistan, Vietnam

² Only economies that submitted the Regional Capability Survey 2016 are eligible to receive funding by the MEDEA project.

Presentation from each economy:

At least **one participant** from each economy is required to provide a **brief presentation** about the legal metrology system on NAWI in their economy. A guide on what to include in your presentation are shown below:

- Who you are and what your role is within your economy
- Explain about your organization and department
- Describe your professional experience in the area of verification of measuring instruments
- Outline the legal metrology system used to control NAWI in your economy
- What is the current situation in your economy about compliance to the international standards
- Describe any problems or issues you have in order to implement the legal metrology system

Registration:

Please complete the attached "[Nomination Form](#)" and send it to Stefanie Scheschinski by **29 August, 2016**.

Currency and Credit Cards:

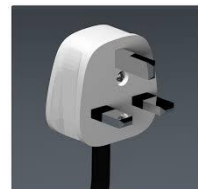
The currency is Ringgit Malaysia. Major credit cards (Visa, Master Card, etc) are accepted in Hotel and big department stores. The exchange rate for 1 USD is about 4.00 MYR (Malaysia Ringgit).

Climate:

The average temperature is about **31 °C** in November in Kuala Lumpur .

Electricity Supply:

Voltage is 240 volts AC, 50 Hz. The power plugs used in Malaysia are 3 pin Power plugs – type G .



Local Time:

GMT +8

Contact Persons:

APLMF Secretariat

Ms. Alli Smith

C/- Trading Standards

Ministry of Business, Innovation & Employment (MBIE)

PO Box 1473, Wellington 6140, New Zealand

Telephone: 0064-4-4601367

E-mail: APLMF.Secretariat@mbie.govt.nz

PTB Contact Person:

Ms Stefanie Scheschinski (**Registration, Flights, Hotel Reservations**)

Bundesallee 100, 38116 Braunschweig, Germany

Tel: +49 531 592 8218

E-mail: stefanie.scheschinski@ptb.de

Host in Malaysia

Mr Mohd Zulkifli bin Saidi (**Visa assistance, Venue and access information**)

Legal Metrology Unit

Consumerism Section,

Enforcement Division,

Ministry Of Domestic Trade, Cooperatives and Consumerism

Tel : +603-88826951

E-mail : mzulkifli@kpdnkk.gov.my

Train-the-Trainer Course on Verification of NAWI, Kuala Lumpur, Malaysia

28 Nov to 1 Dec 2016

Monday 28 November Venue: Corus Hotel, Kuala Lumpur

Time	Details	Presenter
08:30 – 09:00	Registration	Host
09:00 – 09:40	Welcoming address from the host economy Opening ceremony (APLMF Secretariat) Group photo taking	APLMF and Host
09:40 – 10:00	Introduction	APLMF and Host
10:00 – 10:45	Overview of the course Economy reports - explains how NAWI are verified	Marian Haire Trainees
10:45 – 11:15	Coffee Break	
11:15 – 12:30	Economy reports continue	Marian Haire Trainees
12:30 – 14:00	Lunch break	
14:00 – 15:30	Construction of a NAWI	Matthew Lux
15:30 – 16:00	Coffee break	
16:00 – 17:00	Traceability	Matthew Lux

Tuesday 29 November Venue: Corus Hotel, Kuala Lumpur

Time	Details	Presenter
09:00 – 10:30	Equipment for testing NAWI and Visual Inspection	Matthew Lux
10:30 – 11:00	Coffee Break	
11:00 – 12:30	Maximum Permissible Error	Matthew Lux
12:30 – 14:00	Lunch	
14:00 – 15:30	Test Procedures	Matthew Lux
15:30 – 16:00	Coffee Break	
16:00 – 17:00	Test Procedures: Question and answer session	All trainers

Wednesday 30 November Venue: Corus Hotel, Kuala Lumpur

Time	Details	Presenter
09:00 – 10:30	Students work in groups applying tests and getting feedback from their group.	All trainees
10:30 – 11:00	Coffee Break	
11:00 – 12:30	Students work together to answer test questions	All trainers
12:30 – 14:00	Lunch	
14:00 – 15:30	Group discussion of answers to test questions	Matthew Lux Marian Haire
15:30 – 16:00	Coffee Break	
16:00 – 17:00	Preparation for group presentations	All trainers

Thursday 1 December Venue: Corus Hotel, Kuala Lumpur

Time	Details	Presenter
09:00 – 10:30	Group 1 presentations – Discussion and feedback	Participants
10:30 – 11:00	Coffee Break	
11:00 – 12:30	Group 2 presentations – Discussion and feedback	Participants
12:30 – 13:30	Lunch	
13:30 – 15:00	Group 3 presentations – Discussion and feedback	Participants
15:00 – 15:30	Coffee Break	
15:30 – 17:00	Group 4 presentations – Discussion and feedback	Participants
17:00 – 17:30	Closing Ceremony	APLMF and Host